

DOMESTIC

# COLLECTION

**/ BRINGING WATER TO LIFE**

Premium products for high performance,  
sustainable water treatment.

# Monarch Water

## About us

### **Evolution since 1964.**

Ever since our first water softener sale in May 1964 we have strived to be the leaders in water technology. With a combined 270+ years of experience in the water softener/treatment industry our knowledge and expertise is unrivalled. Our products are rated at the very top for quality, efficiency, reliability, and ease of use, with Monarch selected as the number one choice by installers in the UK. Our comprehensive product range means we offer a total 360° product portfolio to suit all requirements within the water treatment sector, in the UK, Europe and Worldwide.

### **Purveyors of Sustainable & Quality Water.**

We have developed a core range of products to suit all our customer's varying and diversified needs, headlined by our High Efficiency range of WRAS-approved Electric and Dual Power water softeners that give you total peace of mind. Our extensive experience means our products have industry-leading quality and reliability, that's why we can offer a comprehensive 7-year parts and 2-year labour guarantee with all our domestic Ultimate softeners. Our class-leading range of softeners have some of the highest flow rates and lowest pressure drops available and are packed full

of the latest water softening technologies to give some of the most efficient and sustainable softener packages available today.

### **Sustainability Ethos**

The Monarch product portfolio has sustainability at its core, with all our products built with energy efficiency in mind. Our range of domestic and Foodservice water softeners offer complete peace of mind to any home, business or project, offering optimum efficiency to heating systems, boilers, appliances, and equipment. In fact, up to 24% energy cost savings can be made using limescale prevention products from Monarch. Installing a Monarch softener also means in excess of 50% reduced demand for cleaning products, further reducing plastic consumption and chemical products.

# CONTENTS

04

Ultimate Electric and  
Dual Power Softeners

08

Plumbsoft Softeners

10

GS4000, GS6000  
& SOF3000

11

Salt & Ancillaries

12

Scale Prevention

14

Scaleout Inhibitor

15

Water Filters

Visit our website,  
[monarchwater.co.uk](http://monarchwater.co.uk)

Find a retailer

Media Suite including videos

Softener product selector

Live chat

Water hardness checker

Product Champions

Installer's Club

Benefits of soft water



Scan here for soft  
water benefits



## MARKET-LEADING EFFICIENT PERFORMANCE



# IN-BUILT TECHNOLOGY

\*All softeners in this guide cost less than £10 a year to run on electricity compared to £117 for a washing machine, £104 for a tumble dryer, £153 for a full-size dishwasher & £155 for a free-standing fridge freezer.

(source for non-softener appliances: which.co.uk, October 2022)

## Ultimate Electric Water Softeners HE Range



The UK's best-selling softener range via the merchant channel.

- WRAS approved - demonstrating quality and durability of the highest standard
- Leading 7 year parts and 2 year labour warranty - for complete peace of mind
- Opti-brining with HE resin - only regenerates the resin (food grade) that has been used
- Includes Rapid-Fit bypass which reduces the components needed for installation by up to 80%
- Built in customer protect programme (CPP) that a) detects leaks in your plumbing system b) delays regeneration until 2am c) learns your water usage patterns to regenerate accordingly and make substantial savings on salt and water use d) automatically adjusts to BST and GMT time changes
- Digital display for easy control and programming
- High flow rates with low pressure drops
- Free flow valve technology - flow rates up to 83 lpm
- Robust design for quick and easy installation
- Complete with full standard installation kit and water hardness test kit

Model & Code	Dims H x W x D (mm)	People	Daily Capacity (litres @ 300 ppm)	Salt tablet use per regeneration (kg)	Max Flow Rate (lpm)
Mini Aqua HE MAQ001HE	480 x 270 x 485	1 - 4	1,467	0.98 - 1.4	83
Midi HE MIDM002HE	555 x 270 x 485	1 - 6	2,280	1.19 - 1.7	78
Master HE MASM003HE	710 x 270 x 485	1 - 10	3,420	1.89 - 2.7	78
Matrix HE MATM004HE	1038 x 275 x 503	2 - 16	5,700	3.15 - 4.5	70

Water pressure 1.5 - 5 bar. Operating temperature 2 - 49°C. 3/4" mbsp connections. Electrical supply - 220v 3 pin plug with plug-in transformer

Depth shown in chart above includes allowance for standard Monarch hoses (excluding Matrix HE which includes Maxflow hoses as standard, shown in depth above). If using Maxflow hoses please allow an extra 18mm to depth. If using Ultraflow hoses (not applicable to the Mini Aqua HE) for 28mm applications, please allow an extra 25mm to depth. Family size is based on allowing 142 litres per person per day and water hardness of 300ppm. (Source: Energy Savings Trust)

# The Midi Evolution

## From then to now



### 1975 Midi

- Only available in Norfolk & Suffolk as Monarch was a localised company
- 12 months parts and labour warranty
- Suitable for 1 - 4 people
- Maximum flow rates 42 lpm
- Supplied with Opella plastic bypass set 660mm H x 230mm W x 495mm D
- 6-day wheel set to regen according to demand
- Used Granular salt

### Current Midi HE

- Internationally successful. The No.1 choice for installers in the UK and the UK's No.1 softener in its class
- 7 year parts and 2 year labour warranty for complete peace of mind
- Suitable for 1 - 5 people
- Maximum flow rates of 78 lpm
- Supplied with unique Rapid-Fit bypass - reducing installation components by up to 80%
- Compact at only 555mm H x 270mm W x 485mm D
- Digital display with easy push button set up
- Uses Tablet softener salt
- 2,280 litres capacity per regen at 300ppm

WRAS approval  
Opti-brining® with HE resin:  
46% greater capacity  
24% less water use  
56% salt savings over conventional softeners

Customer Protect Programme that:

- a) detects leaks in your plumbing system
- b) delays regeneration until 2am
- c) learns your water usage patterns to regenerate accordingly and make substantial savings on salt and water use
- d) automatically adjusts to BST and GMT time changes



Save **£££'s** per year on hard water costs. Your appliances will last longer!

Up to **£600**

Save up to **24%** on energy bills! And spend significantly less on soaps, detergents & cleaning products!

Up to **24%**

# CURRENT MIDI HE



# Ultimate Dual Power Range

## Ultra & Premio HE



**High Efficiency Twin Tank Duplex Series  
Dual Power Softener with meter control.**



- WRAS approved - demonstrating quality and durability of the highest standard
- Leading 7 year parts and 2 year labour warranty - for complete peace of mind
- Can be powered by a single 9V long-life battery (6LR61) or via a plug-in transformer
- Opti-brining with HE resin - only regenerates the resin (food grade) that has been used
- Sof'n'polish system - double the contact time for ultra soft water
- Includes Rapid-Fit bypass which reduces the components needed for installation by up to 80%
- Built in customer protect programme (CPP) that a) detects leaks in your plumbing system b) delays regeneration until 2am c) learns your water usage patterns to regenerate accordingly and make substantial savings on salt and water use d) automatically adjusts to BST and GMT time changes
- High flow rates with low pressure drops
- Free flow valve technology - flow rates up to 65 lpm
- Robust design for quick and easy installation
- Digital display for easy control and programming
- Complete with full standard installation kit and water hardness test kit

Model & Code	Dims H x W x D (mm)	People	Daily Capacity (litres @ 300 ppm)	Salt Tablet/Block use per regeneration (kg)	Max Flow Rate (lpm)
UltraHE PSU027HE	557 x 269 x 489	1 - 10	1,520	0.84 - 1.2	65
PremioHE PSPO22HE	788 x 269 x 489	2 - 20	3,040	1.68 - 2.4 (tablet only)	61

Water pressure 1.5 - 5 bar. Maximum operating temperature 49°C. 3/4" mbsp connections.

If using Ultraflow hoses for 28mm applications please allow an extra 10mm to width. Family size is based on allowing 142 litres per person per day and water hardness of 300ppm. (Source: Energy Savings Trust)

**QUALITY & RELIABILITY**  
BATTERY OR ELECTRICALLY OPERATED



ULTRA  
SOFT  
WATER

# Electric Softener Plumbsoft Range



**Smart Efficiency water softener with meter control.**



- WRAS approved - demonstrating quality and durability of the highest standard
- Slimline for easy siting and installation
- Only regenerates the resin that has been used
- Meter control for optimum performance
- 5 year parts and 2 year labour warranty - for complete peace of mind
- Includes Rapid-Fit bypass which reduces the components needed for installation by up to 80%
- Built in customer protect programme (CPP) that a) detects leaks in your plumbing system b) delays regeneration until 2am c) learns your water usage patterns to regenerate accordingly and make substantial savings on salt and water use d) automatically adjusts to BST and GMT time changes
- Flow rates up to 78 lpm
- Simple 2 level programming with digital display - for quick set-up
- Complete with full standard installation kit and water hardness test kit

Model & Code	Dims H x W x D (mm)	People	Daily Capacity (litres @ 300 ppm)	Salt tablet use per regeneration (kg)	Max Flow Rate (lpm)
Plumbsoft SE-11	624 x 225 x 475	1 - 5	1,900	1.5	78
Plumbsoft SE-14	802 x 225 x 475	1 - 8	2,850	2.25	78
Plumbsoft SE-23	1088 x 225 x 475	1 - 12	4,180	3	75
Plumbsoft SE-30	1309 x 225 x 493	1 - 16	5,700	4.5	70

Water pressure 1.5 - 5 bar. Maximum operating temperature 49°C. 3/4" mbsp connections. Electrical supply – 220v 3 pin plug with plug-in transformer

All models Depth includes for standard hoses with exception SE-30 which is based on Maxflows being used. Family size is based on allowing 142 litres per person per day and water hardness of 300ppm. (Source: Energy Savings Trust)



**OPTIMUM PERFORMANCE**  
SLIMLINE INSTALLATION

VALUE FOR  
MONEY



# PROFESSIONAL PERFORMANCE SUPERIOR RESULTS



# INTELLIGENT CONTROL

## Electric Softeners GS4000 HE, GS6000 HE & SOF3000 HE



High Efficiency, high capacity water softeners suitable for up to 19 people.

- Leading 7 year parts and 2 year labour warranty - for complete peace of mind
- Opti-brining with HE resin - only regenerates the resin (food grade) that has been used
- Includes Rapid-Fit bypass which reduces the components needed for installation by up to 80%
- Intelligent microprocessor that controls, monitors and remembers your water use
- High flow rates (up to 78 lpm) and low pressure drops
- Proven long life and accurate metering system
- Built in customer protect programme (CPP) that a) Detects leaks in plumbing systems b) Delays regenerations until 2am c) Stores data in the event of a power cut d) Initiates an additional Super Regen if ever required e) Learns and remembers water usage patterns to make substantial savings on salt and water use
- SOF3000 space-saving separate salt tank that can be placed up to 5 metres from the softener
- SOF3000 Digital display for easy control and programming
- SOF3000 Larger 75L salt tank available upon request
- Complete with full standard installation kit (upgrades available) and water hardness test kit

Model & Code	Dims H x W x D (mm)	People	Daily Capacity (litres @ 300 ppm)	Salt tablet use per regeneration (kg)	Max Flow Rate (lpm)
GS4000 HE	870 x 350 x 565	1 - 13	4,595	1.89 - 3.7	75
GS6000 HE	1100 x 350 x 565	1 - 19	6,430	2.70 - 5.3	75
SOF3000 HE	597 x 270 x 270	1 - 10	3,000	1.17 - 2.3	78

Water pressure 1.5 - 5 bar. Maximum operating temperature 49°C. 3/4" mbsp connections.

Depth shown in chart above includes allowance for standard Monarch hoses (included). If using Maxflow hoses please allow an extra 18mm to depth. If using Ultraflow hoses for 28mm applications, please allow an extra 25mm to depth. Family size is based on allowing 142 litres per person per day and water hardness of 300ppm. (Source: Energy Savings Trust)

## No.1 choice for Salt

Tablet, Granular & Block

Sustainable salt production with the Ultimate purity.

- All salt is manufactured to BS: EN973 - Class A ensuring the highest food grade quality
- No anti-caking agents
- Easy-carry 10kg tablet bags available
- Heavy-duty, durable, water resistant bags
- All softeners in this guide use tablet salt apart from the Ultra HE (tablet or block)

## Ancillaries

Available online

Full list of ancillaries are available on [monarchwater.co.uk/ancillaries](http://monarchwater.co.uk/ancillaries)



SUSTAINABLE PRODUCTION  
FOOD GRADE QUALITY



ULTIMATE  
PURITY

# Scale Prevention

## Scaleout Advance



Combining whole-house scale prevention with premium filtered drinking water at every tap.



Anti-microbial filter housing

- 24/7 whole-house limescale protection for your kitchens, bathrooms and plumbing system
- Leading 5 year parts and 2 year labour warranty - for complete peace of mind
- Enhanced safety with Anti-microbial filter housing
- Clean, fresh and healthy filtered drinking water at every tap.
- Every tap is free from chlorine, bad tastes, odours, pesticides, herbicides and organic chemicals
- Reduces hot water bills
- Easy to install - no drain, power points are required
- Easy change cartridges that only require changing once a year
- Increases water flow rates by removing existing scale
- Water clarity even when preventing scale
- Flow rates up to 75 lpm.
- Suitable for 15, 22 and 28mm supplies
- Complete with full installation kit

Model & Code	Dims H x W x D (mm)	Max Flow Rate (lpm)	Max Water Pressure (bar)	Temperature Range (°C)	Connections
SA-15	355 x 320 x 182	30	1 - 5	4 - 45	3/4" mbsp
SA-22	355 x 360 x 182	45	1 - 5	4 - 45	3/4" mbsp
SA-28	355 x 360 x 182	60	1 - 5	4 - 45	1" mbsp
SA-LC	620 x 360 x 182	75	1 - 5	4 - 45	1" mbsp

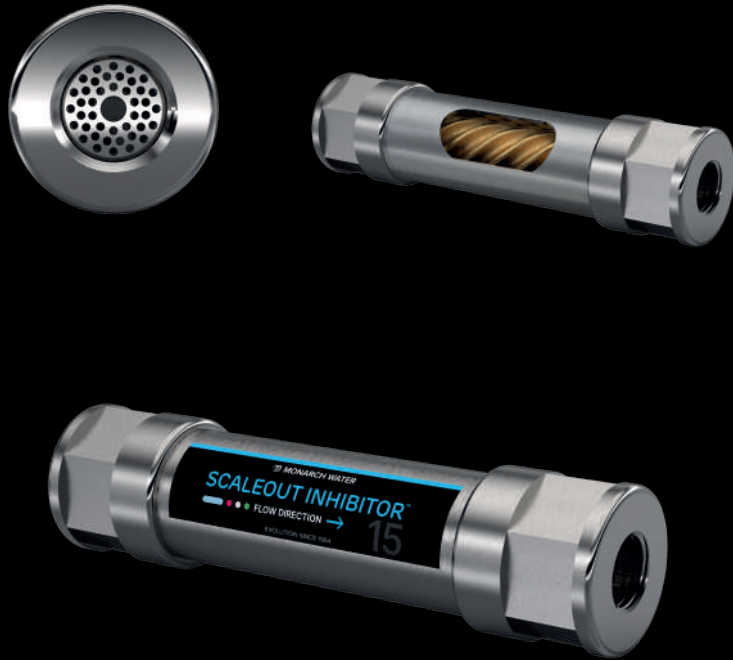
All dimension widths include fittings and hose connections.

**WHOLE-HOUSE PROTECTION**  
EXCEPTIONAL WATER CLARITY



**ANTI-MICROBIAL  
FILTER  
HOUSING**

## EASY INSTALLATION UNIQUE CATALYTIC CORE



# QUALITY STAINLESS STEEL

## Scale Prevention Scaleout Inhibitor



A superior conditioning performance thanks to a unique, food-grade catalytic core treatment method. Protecting water outlets and household appliances such as boilers, showers, hot water tanks, washing machines, dishwashers and kettles.

- WRAS approved - demonstrating quality and durability of the highest standard
- Leading 10 year parts warranty for complete peace of mind
- Water remains treated for up to 3 months
- Prevents new and removes existing scale from your system
- Self cleaning action to keep the media core working at optimum efficiency
- No maintenance – fit and forget
- No earth bonding is required.
- Straight forward installation, can be connected to any type of pipe - copper, pvc, galvanized, etc.
- Can be installed vertically or horizontally

### How it works? 3 stages to the ultimate conditioned water

1. A unique aerator screen which optimises turbulence and helps separate the bicarbonate (which causes scale)
2. Pioneering spiral alloy core combined with innovative surface chemistry composition to create a powerful catalytic reaction
3. The result is the conversion of scale causing ions into non-scale forming crystals which flow freely through the system without leaving hard scale deposits

Model & Code	Dims L x Ø (mm)	People	Optimum Flow Range (lpm)	Max Pressure (bar)*	Connections
SI-15	180 x 44	1 - 4 (15 or 22mm pipework)	4 - 21	16	1/2" fbsp
SI-22	180 x 44	4 - 5 (22 or 28mm pipework)	18 - 41	16	3/4" fbsp
SI-28	210 x 49.5	6+ (28 or 35mm pipework)	34 - 62	16	1" fbsp

Temperature 2 - 80°C

We recommend sizing your Scaleout Inhibitor upon the number of people per household and not to pipesize.

\*We recommend a PLV for all water pressures over 5 bar.

# Water Filter

## MA12CH

A compact water filter system with easy change cartridges.

- Impurities significantly reduced; Chlorine, bad tastes, odours, organic chemicals, herbicides, pesticides
- Incorporates scale inhibiting media to help reduce kettle scale
- Suitable for individual appliances including plumbed in fridges and coffee machines
- Auto shut-off head - No need to turn water off when changing the cartridge
- Complete with Monarch tap and full installation kit

Model & Code	Dims H x W x D (mm)	Capacity (Litres @ 180ppm)	Max Flow Rate (lpm)	Water Pressure (bar)	Connection
MA12CH	295 x 70 x 70	6,000	5	1.5 - 5.5	3/8" speedfit

Other variants available - details on request



## COMPACT SYSTEM AUTO SHUT-OFF HEAD



# REDUCE IMPURITIES

We're here to help

**Opening Hours:**

Monday-Friday 08:30-17:00

+44 (0)1986 784759

Live chat via [monarchwater.co.uk](https://monarchwater.co.uk)



 **MONARCH WATER**

Monarch Water Ltd., Fair Green, Diss, Norfolk, IP22 4DG  
[info@monarchwater.co.uk](mailto:info@monarchwater.co.uk) | [monarchwater.co.uk](https://monarchwater.co.uk)

