

# SCALEOUT XP

- the permanent solution to scale-related problems.



Without Scaleout

With Scaleout



MW0119SXP



- ✓ Targets existing scale
- ✓ Increases water flow rates
- ✓ Prevents new hard scale forming
- ✓ Whole house protection 24/7
- ✓ Compact and easy to install
- ✓ 15, 22, 28mm supplies
- ✓ UV resistant finish



MONARCH WATER

NEVER KNOWINGLY BETTERED



## WATER HARDNESS - THE ORIGIN

As rain falls to earth, it dissolves the carbon dioxide within the atmosphere. This carbon dioxide (CO<sub>2</sub>) enriched water passes through many different layers of soil, rock, stones etc and absorbs calcium, magnesium and many other minerals to become 'hard' water.

It is the 'hard' water within over 60% of the UK's water supplies that causes so much trouble as scale within peoples' water systems.

Limescale increases energy bills and cleaning costs, and leads to damage to heat exchangers!



## Comparing the Monarch Scaleout XP to other LCDs (limescale control devices)

The Scaleout XP is a 24/7 product, as they are the only LCD's (limescale control devices) available that produce a permanent change to the water structure.

### IMPORTANT:

Every household in the UK has a form of stored water, be it tanks in the roof, the heat exchanger in your combi-boiler or inside an unvented/pressurised system, where water will sit over a period of time i.e. while you are sleeping.

Other limescale control devices only offer a temporary relief to the effects of hard water, lasting only a few hours, so once the treated water has been stored, it reverts back to scale causing water again.

This does not apply to Scaleout XP water, as it will not revert back to scale forming water again.

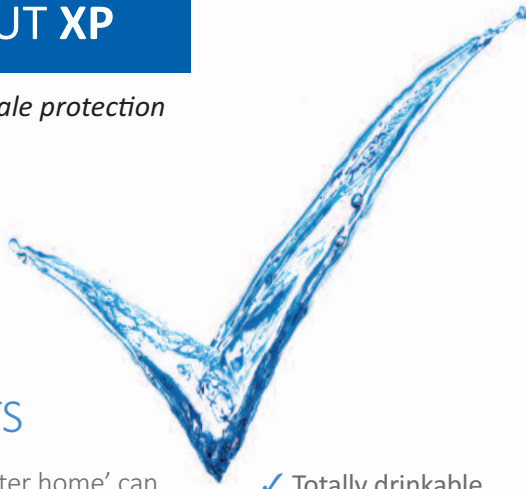
The Monarch Scaleout XP is the only limescale control device that gives permanent 24/7 protection to your water system for both scale prevention and removal too.

No other LCD manufacturer offers this specification.



# SCALEOUT XP

*permanent limescale protection*



## LOWER COSTS

The average 'hard water home' can spend between £200 & £240 a year to overcome the effects of hard water. The harder the water, the more cleaning agents and laundry detergents are required. Appliances' life expectancy is significantly reduced. The life expectancy of a boiler's heat exchanger is reduced by up to 80% with a hard water supply!

A Monarch Scaleout XP will immediately target your existing scale, returning your boiler and appliances to maximum efficiency and lower running costs.

Additionally, unnecessary scale related costs for the repair and maintenance of appliances can be prevented. Remember, with a scaled boiler, you have to heat the scale before you can heat the water. Just 2mm of scale will increase your hot water bills by 12%. 3mm and it rises to nearly 25%!

- ✓ Totally drinkable
- ✓ Powered by the water you use
- ✓ Increases water flow rates by targeting existing scale
- ✓ A model for every application
- ✓ Low maintenance
- ✓ Reduces your carbon footprint
- ✓ Significantly reduces repair costs due to scale damage
- ✓ Targets existing scale
- ✓ Prevents new hard scale forming
- ✓ Easy to install - full installation kit provided
- ✓ Compact - from only 525mm high
- ✓ Suitable for all metals
- ✓ Food grade materials throughout
- ✓ Suitable for 'whole house' protection
- ✓ Reduces hot water bills by 12-25%
- ✓ Can help improve certain skin conditions\*

\*Anecdotal evidence suggests that CO<sub>2</sub> enriched water can in some circumstances help improve certain skin conditions<sup>1</sup>





## PROTECTED APPLIANCES

Times when your washing machine / dishwashers' performance is affected by hard scale lie in the past.

In future, with Scaleout XP water, your appliances will no longer have an unsightly hard scale residue.

You will also notice a marked improvement to their efficiency.



## PEACE OF MIND

You can have improved peace of mind knowing that with Scaleout XP you have...

- ✓ Lower hot water bills
- ✓ Lower household bills
- ✓ An efficient boiler
- ✓ Protected appliances
- ✓ Drinking water rich in vital minerals
- ✓ Permanent whole house protection



# SCALEOUT XP

*permanent limescale protection*

## MODEL SCALEOUT XP

### How it works

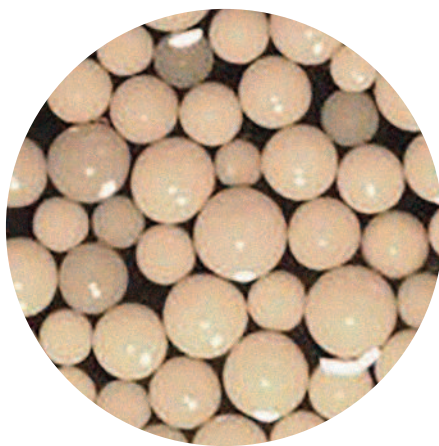
Water contains two main types of hardness ions that cause scale.

Monarch's CBT resin is the only one that treats both, the Cations and the Anions in water.

The scale causing ions (dissolved limescale) pass through a bed of food grade ceramic beads. These ceramic beads convert the ions into non-scale causing crystals that flow harmlessly through your plumbing system and end up down the drain.

The crystals in the water are both non-scale forming whilst also descaling, offering many benefits to the homeowner in its performance.

These special crystals once created (permanent), cannot form as hard scale on surfaces including heating coils and elements, fittings, or the inside of pipes etc.



*Ceramic Beads (CBT)*

## CRYSTALS

### By-product of Scaleout XP's operation

In areas with high levels of water hardness, the crystals may show themselves as a white residue (soft scale) after water has evaporated.

We recommend this harmless residue be simply wiped away before allowed to accumulate.

Additionally, the Crystal Guard post filter is designed to significantly reduce any residue seen.

To see the animated Scaleout video 'how it works', go to [www.scaleout.co.uk/video](http://www.scaleout.co.uk/video)

*Suitable for 15, 22 and 28mm supplies*

*Pearlescent UV finish*

*Robust design with CBT*



*Crystal Guard Post Filter*

HOW IT WORKS

## ADDITIONAL INFORMATION

The beads have a life expectancy of 3 years as determined by the cleanliness of the incoming water supply (not water hardness).

Replacement packs can be supplied for easy DIY changing, or alternatively Monarch can offer a full replacement IN-HOME service.

All models recommended for use on mains water supplies only.

All XP models incorporate a Crystal Guard post filter. It has a low cost internal cartridge that is to be changed annually.

### MODEL SELECTION GUIDE SPECIFICATION

Min – Max Operating water pressure	1.5 - 5 bar
Min – Max Operating water temperature	4 - 50°C
pH	6.5 - 8.5
Max Iron content	0.3 mg/l
Max Manganese content	0.05 mg/l
Max Copper content	0.3 mg/l

## APPROVALS AND COMPLIANCES

NSF/ANSI- 61: Drinking Water System Components

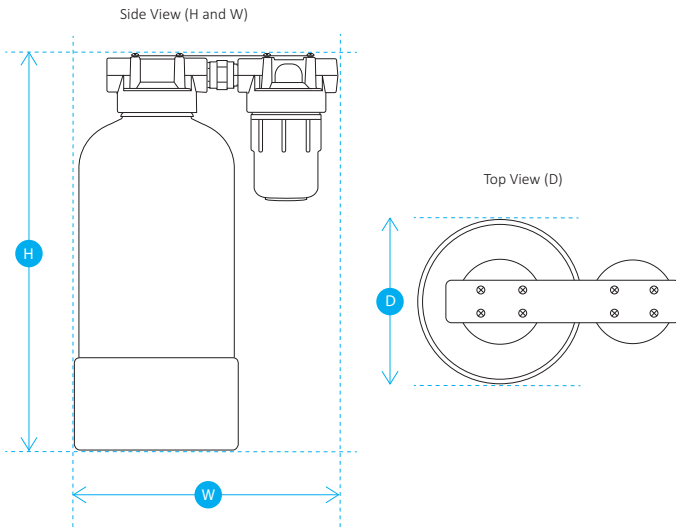
BS6920 Material Compatibility

ACS Certified

# TECHNICAL SPECIFICATIONS

Applications	Rec Model up to 500 ppm	Max rec. Flow (lpm)	Standard Connections	1" Upgrade Available	Dimension D x H x W (mm)	Post Filter Ref.
15mm supplies	SXP15	30	¾" MBSP	-	195 x 525 x 450	SXPF5
22mm supplies	SXP22	45	¾" MBSP	-	220 x 525 x 450	SXPF5
28mm supplies	SXP28	60	1" MBSP	Standard	220 x 660 x 450	SXPF10
Light Commercial	SXPLC	75	¾" MBSP	Yes	270 x 1110 x 480	SXPF10

Pressure drops at maximum flow rates: SXP15 at 0.3 bar. SXP22/28 at 0.4 bar. SXPLC at 0.9 bar.  
 For extreme water hardness over 500ppm please contact Monarch Water for further advice.  
 All dimensions include connected hoses.



<sup>1</sup> references

1998 study into 'Positive effects of topically applied CO<sub>2</sub> impregnated water' by M Bock & H.J. Schwanitz, Dept of Dermatology, University of Osnabruck, Germany.

2004 study into 'Effects of CO<sub>2</sub> enriched water on barrier recovery' by M Boch, N.Y. Schurer and H.J. Schwanitz, Dept of Dermatology, University of Osnabruck, Germany.

# SCALEOUT XP

*permanent limescale protection*

Supplied by:



**Monarch Water Ltd**  
01986 784759

[sales@monarchwater.co.uk](mailto:sales@monarchwater.co.uk) [www.monarchwater.co.uk](http://www.monarchwater.co.uk)